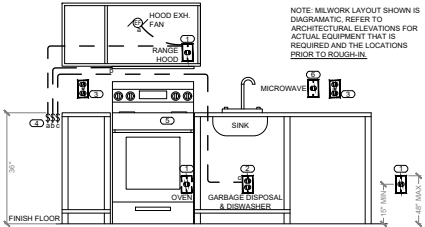
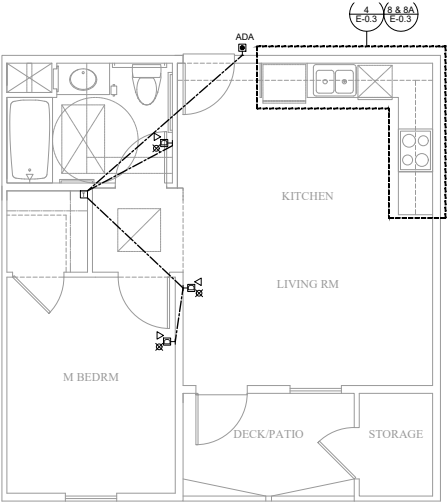

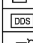
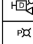
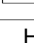




ADA OUTLETS MOUNTING HEIGHTS



- KEYED NOTES:
- 1 DEDICATED SIMPLEX RECEPTACLE MOUNTED IN CASEWORK FOR LOAD INDICATED RELATIVE LOCATIONS ARE DIAGRAMATIC, REFER TO ARCHITECTURAL PLANS FOR ACTUAL LOCATIONS.
 - 2 DISCONNECT SWITCH FOR SIMPLEX RECEPTACLE SERVING DISPOSALS AND DISHWASHER. LABEL SWITCHES: "DISPOSAL" AND "DISHWASHER DISCONNECT".
 - 3 GFCI/AFCI RECEPTACLE ON EACH COUNTER AND ON EITHER SIDE OF SINK. PROVIDE A MINIMUM OF TWO DEDICATED COUNTERTOP RECEPTACLES. CIRCUIT ALL OTHER COUNTERTOP RECEPTACLES TOGETHER ON A COMMON CIRCUIT.
 - 4 SWITCH (a,b) FOR CONTROLLING RANGE HOOD FAN, LIGHT UNDER HOOD. SWITCH (c) FOR CONTROLLING GARBAGE DISPOSAL UNDER SINK.
 - 5 PROVIDE ACCESSIBLE CONTROLS IN FRONT OF STOVE TO COMPLY THE ADA CODE.
 - 6 THE MICROWAVE SHOULD BE OVER THE COUNTER WITH A DEDICATED CIRCUIT TO COMPLY WITH ADA.

ADA KITCHEN RECEPTACLE LAYOUT

DEVICES FOR THE HEARING IMPAIRED		
SYMBOL	DEVICE	NOTES
	ADA	
	BUTTON FOR DOOR SIGNAL	OUTSIDE DOOR ON STRIKE SIDE, +48" AFF FACTORY LABEL ON COVER PLATE
	2-GANG BOX W/ TRANSFORMER FOR DOOR BELL	MOUNT IN SOFFIT OR CABINET - PROVIDE ACCESS
	DOORBELL DISABLE SWITCH	WALL BEHIND ENTRY DOOR, GANG W/ LIGHT SWITCH "DOORBELL DISABLE SWITCH" PLAQUE
	HORN STROBE FOR DOOR SIGNAL- HEARING IMPAIRED	MOUNT 80" AFF
	PHONE STROBE	MOUNTED ON YOUR HANDSET.

HEARING IMPAIRED UNIT DETAIL